



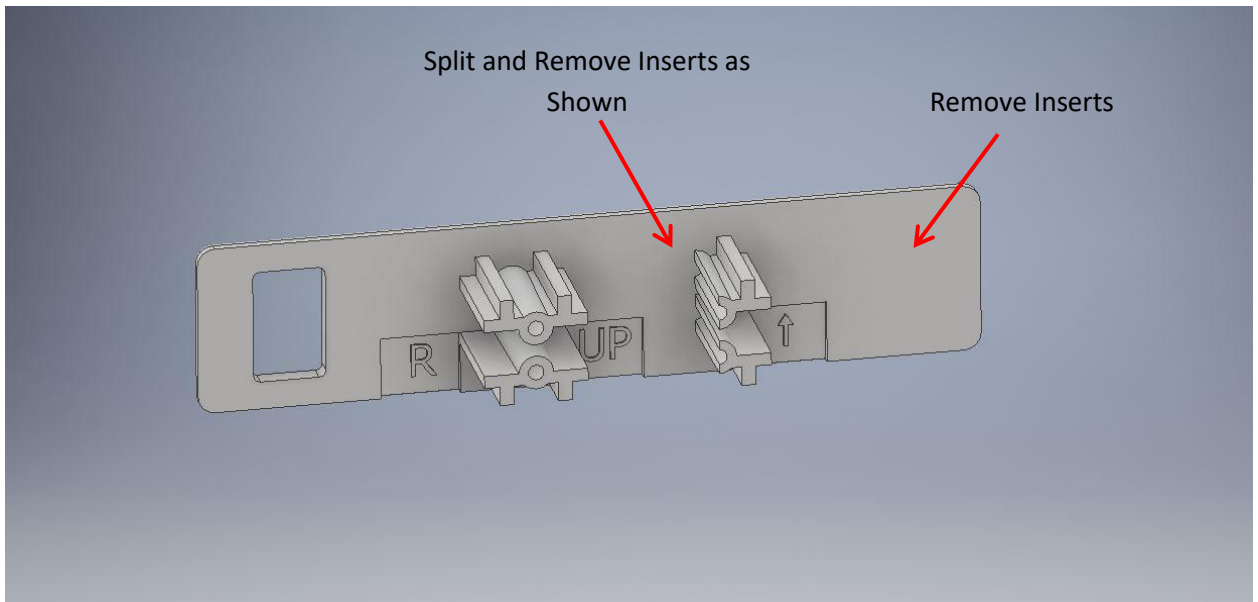
Technical Guidelines for DuxxBak End Cap Placement on a 45 Degree Angle Deck

**** Please Note****

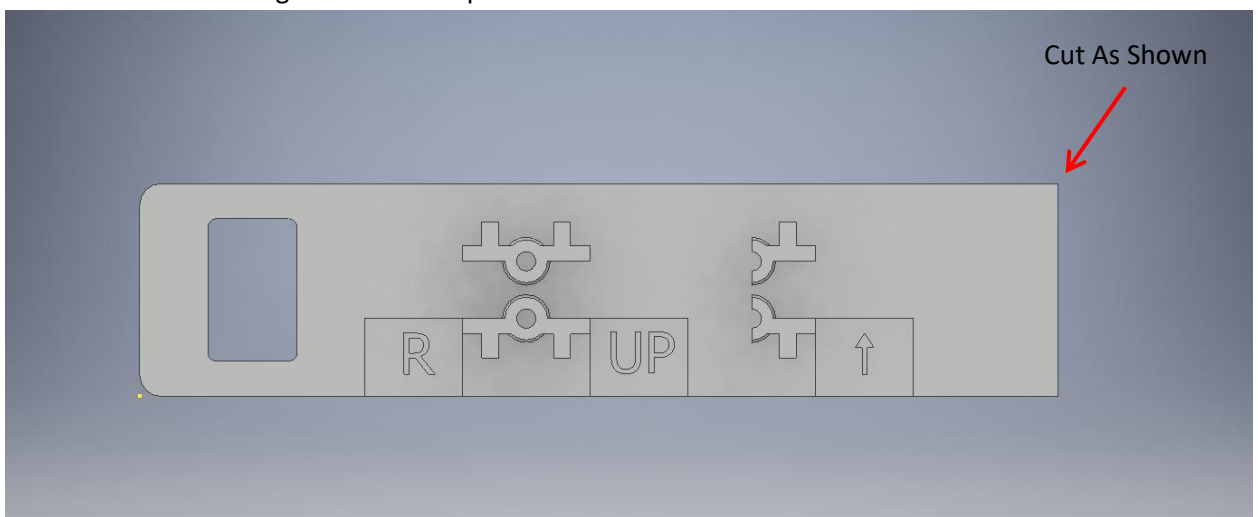
Follow all local building codes, use sound construction practices and follow all other installation instructions for DuxxBak Decking to help assure that your deck will provide many years of enjoyment

****This method requires two end caps per board****

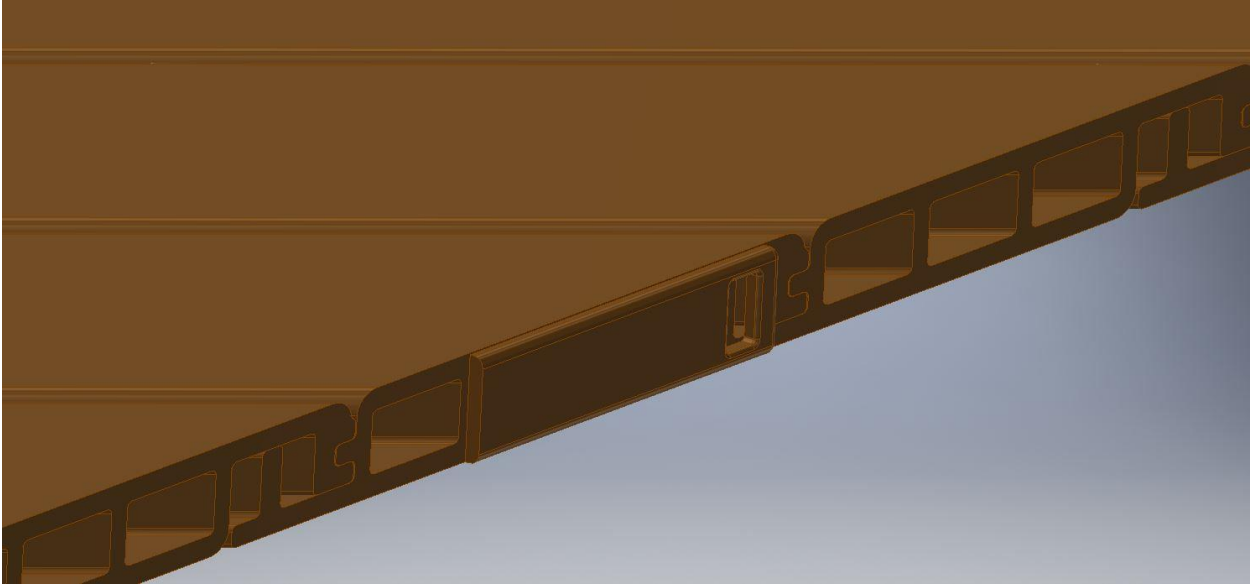
1. Cut your first end cap as shown below.



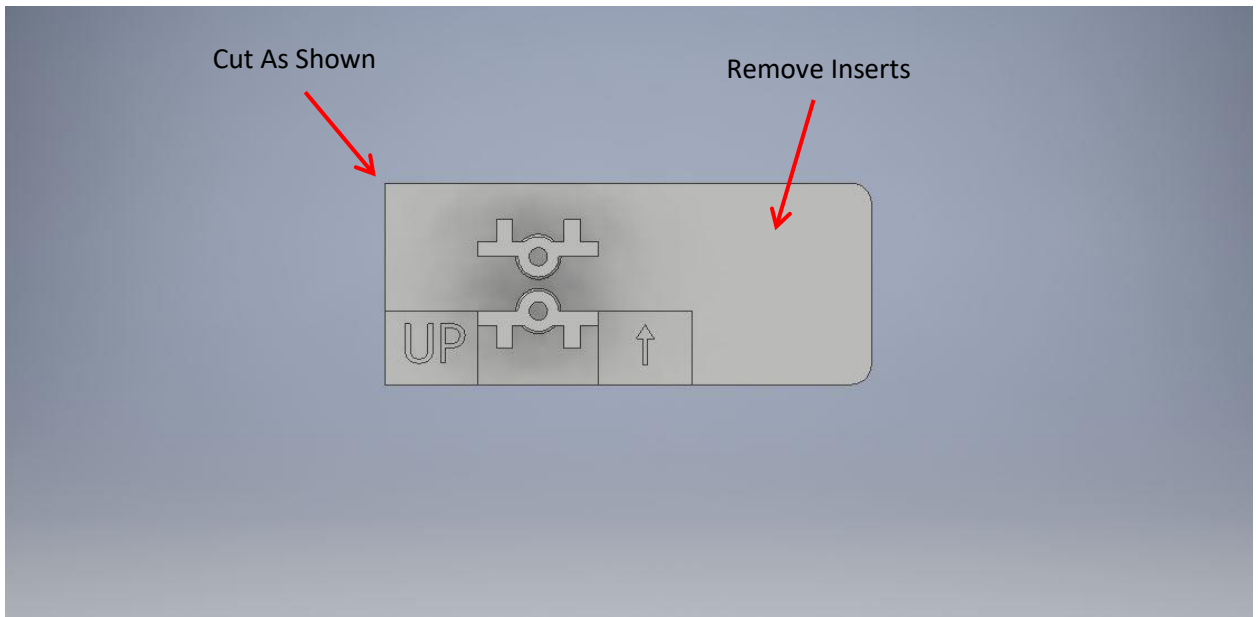
2. Remove the filleted edge of the end cap as shown.



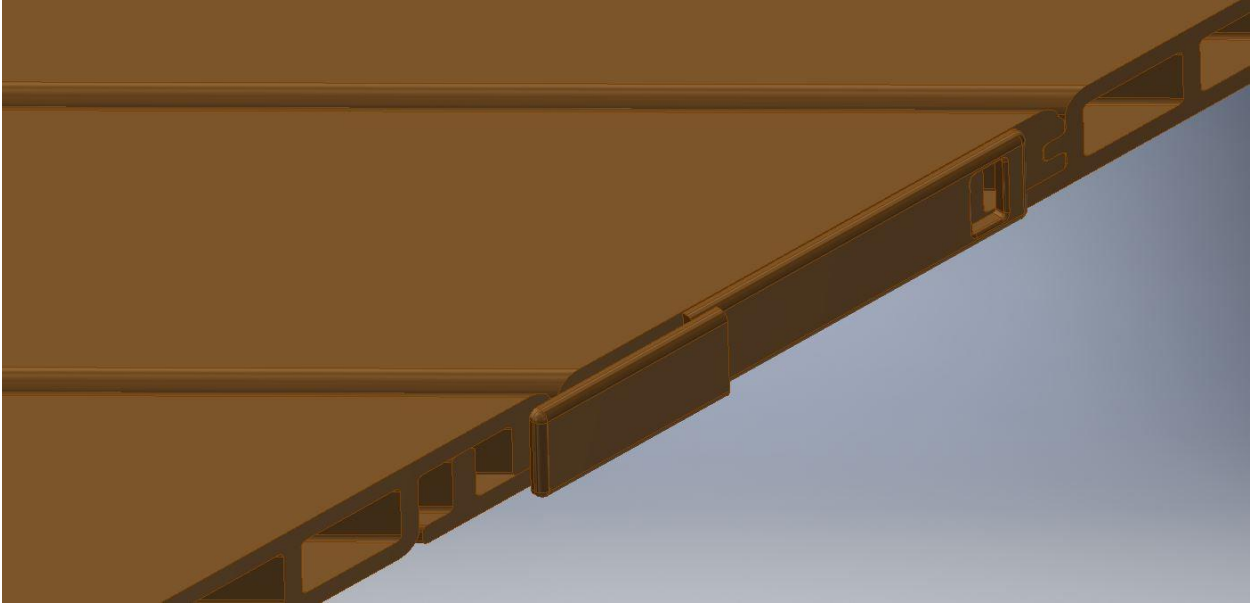
3. Position the first end cap while being sure to align the hole of the end cap with the drainage channel of the deck board. Use LEXEL brand adhesive or silicone to better secure the end cap if necessary.



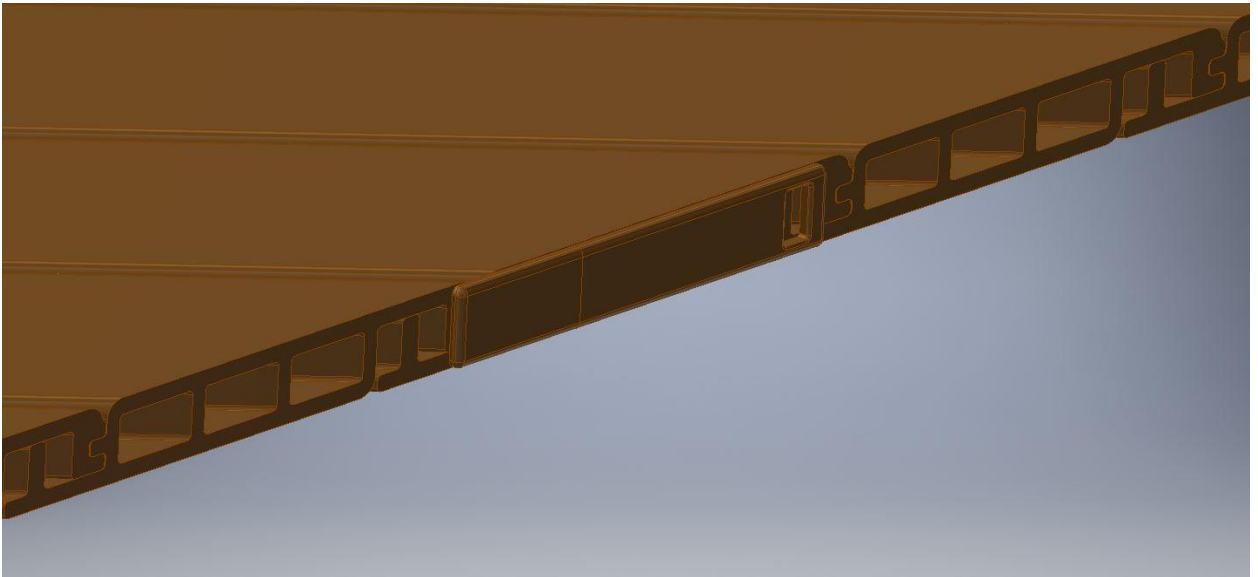
4. Cut the second end cap as shown below.



5. Position the second end cap as shown and mark where the cap must be cut to sit flush with the first.

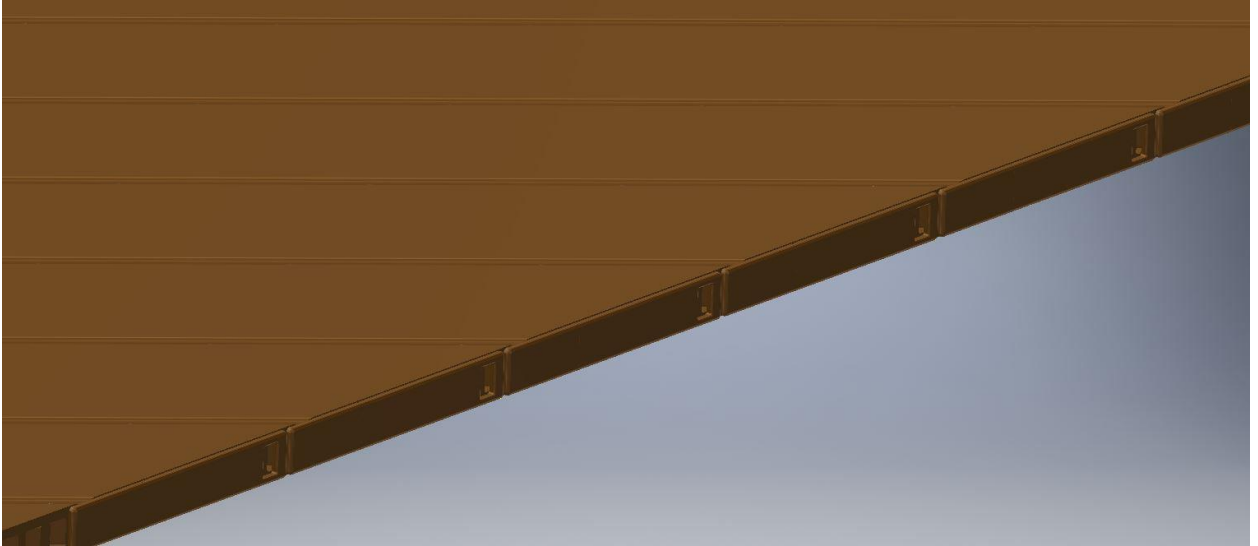


6. Cut the second end cap and insert it into the end of the DuxxBak board. Use LEXEL brand adhesive or silicone to better secure the end cap if necessary. When done properly, only a small seam will be visible where the two end caps meet.





7. Repeat this process for the remaining boards.



Prepared By: Green Bay Decking LLC, August 11, 2017