



DuxxBak[®]
COMPOSITE DECKING



FIRST, THE SCIENCE BEHIND OUR DUXXBAK COMPOSITE COMPOUND

- All DuxxBak[®] Composite Decking products contain
 - Rapidly renewable, **American** ingredients
 - Rice Hulls
 - BioDac
 - Virgin HPDE
 - Colorants
 - UV inhibitors
 - Lubricants
- Our composite products contain no wood, and no PVC
 - Wood **will** break down over time, **will** absorb water, **will** fade.
 - Cellular PVC **is** environmentally unstable, **will** dent easily, **will** fade unpredictably, and **is** toxic to the environment.



**WHAT'S
BETTER ABOUT
THE DUXXBAK®
COMPOSITE
DECKING
COMPOUND?**

Lowest moisture
absorption rate
of any
composite in the
market

1/10th the absorption of Trex Transcend
1/3 the absorption of Moisture Shield

Super-low fade

Any variation in Traction finish will weather out in 45-60 days, after which Traction colors are pretty much colorfast.
No wood or PVC to break down or fade.
ArmorCap finish uses very latest, proven color technology.

Dairy-Grade
Virgin HDPE

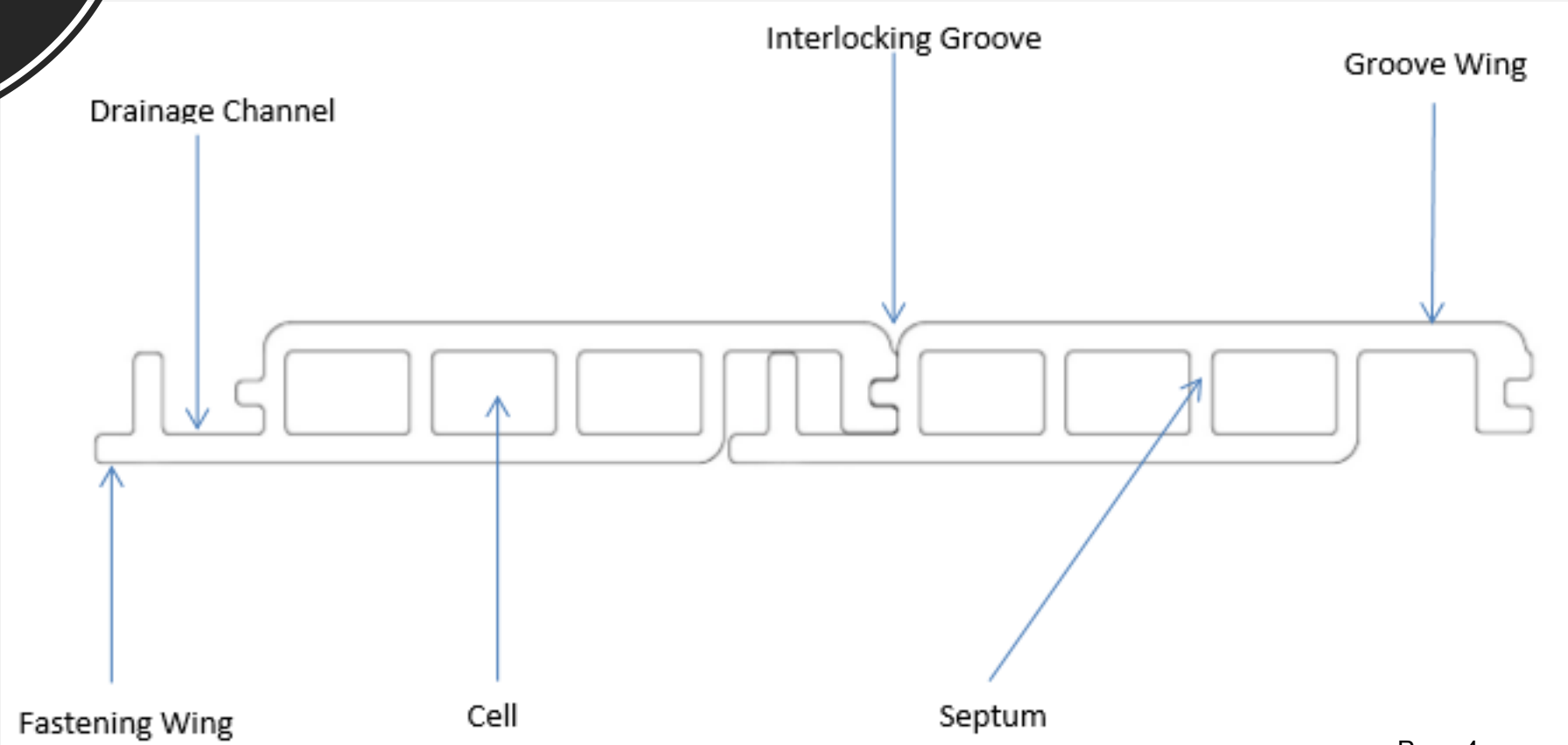
We are Green with use of rapidly renewable, otherwise disposable ingredients.
Our ingredients allow consistent, reliable, repeatable production.
No recycled garbage that would cause inconsistent outcomes.

DuxxBak[®] Dekk

Sales Benefits

- DuxxBak Dekk eliminates need for a secondary drainage system
 - DuxxBak Dekk drains outside the deck footprint
 - Super-fast, easy installation
 - Lifetime Limited Warranty
- DuxxBak Dekk is the least expensive option for a dry-space underneath deck
 - Available in 12', 16', 20', 24' and custom lengths.
 - Available in Traction or ArmorCap finishes
 - DuxxBak coverage is 5 3/4".

**PARTS OF
A
DUXXBAK
DEKK
BOARD**



PLANNING YOUR DUXXBAK DEKK INSTALLATION

The New Structure

- Joists should be installed parallel with house.
- Joists can be spaced up to 24" OC.
- Decking needs unrestricted slope of at least 1/8" per LF along the length of the board.
- Must build structure in plane across top of joists.
- Each joist longer than 6' needs at least three points of contact.
- Structure can be assembled using wood or steel framing components.
 - Fasteners will differ. Contact us for alternatives.
- Q: Considering all this, what's wrong with the deck pictured?



PLANNING YOUR DUXXBAK DEKK INSTALLATION

The Traditional Deck Structure

“*Sleeper Method*” or “*Blocking Method*”

- Typical joists already installed perpendicular to the house on a level plane.
- We must now introduce an unrestricted slope of at least 1/8” per Linear Foot along the *length of the joists*.
 - Cut support columns 1” for each 8’ of deck extension.
- With slope achieved:
- Two methods of frame retrofit.
- 2”x4” *sleepers* installed atop the joist structure.
 - Must be sure enough space exists at step down from door.
- *Blocking* between the joists at 24” OC, with #10 x 3” exterior screws.
 - Blocking helps to dial in otherwise erratic framing components.
- Must bring structure into plane.



FIGURING AND ORDERING DuxxBak® Dekk MATERIALS

DuxxBak Dekk coverage is 5 ¾”

Available in 12’, 16’, 20’, 24’, and custom lengths.

Custom lengths available for special projects, in unit quantities.

Other items you’ll need:

- High-quality Adhesive Sealant
 - We recommend **LEXEL** (available at Lowes).

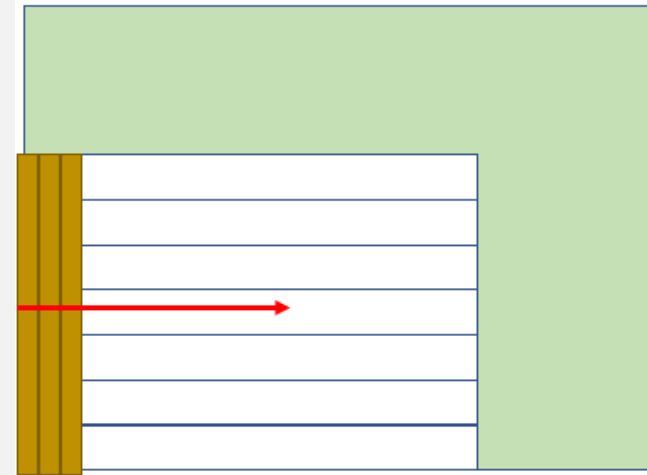
- Flashing
 - Aluminum
 - Copper
 - Vinyl
 - Galvanized



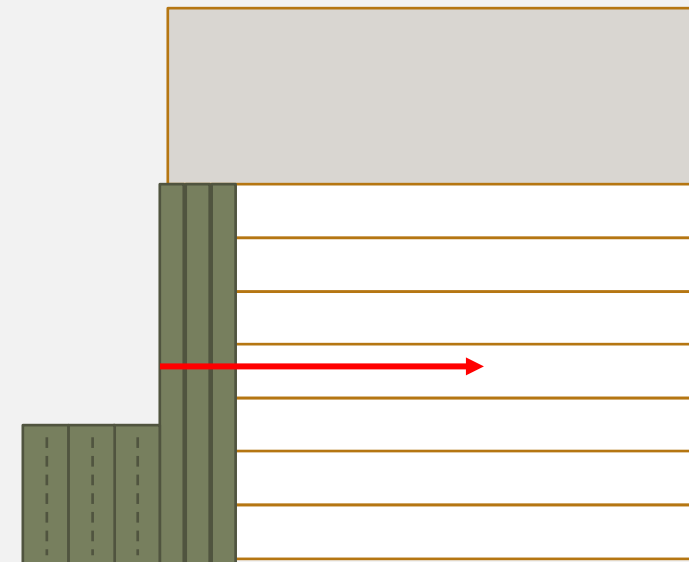
INSTALLING DuxxBak[®] Dekk

- **Where do we start?**

- Always work toward a wall, if possible.
 - Keeps final rip concealed.



- Consider stair location
 - We want a full board at stair top to avoid ripped board at that spot.



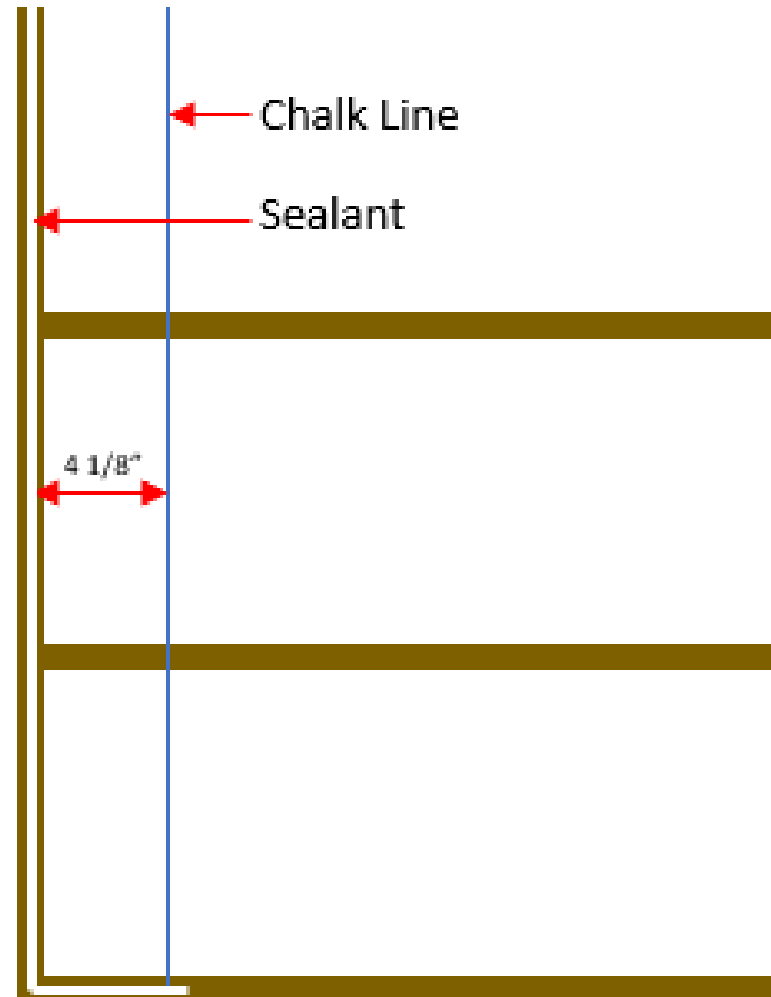
PREPARE &
INSTALL
FIRST
COURSE



- Rip Groove Wing and toss
- Using sander, clean up cut edge
 - 50 or 80 grit sandpaper will allow consistent brushed finish.
- Notch board around obstructions, leaving 3/16" gap.

PREPARE & INSTALL FIRST COURSE

- Snap chalk line 4 1/8" +/- from outside edge of rim joist.
- Place bead of sealant on top of rim joist, and atop first and last joist.
- Set prepared board in place along chalk line. Remember, 3/16" gap at house.



PREPARE & INSTALL FIRST COURSE

- Secure first course with approved Trim Screws face-screwed into rim joist. Install all face-screws first, to align board with chalk line.
- Install one approved Trim Screw through the Fastening Wing into each joist.



DuxxBak Composite Decking

DuxxBak Dekk Mounting Clip Installation Guide

Issued 3/15/24

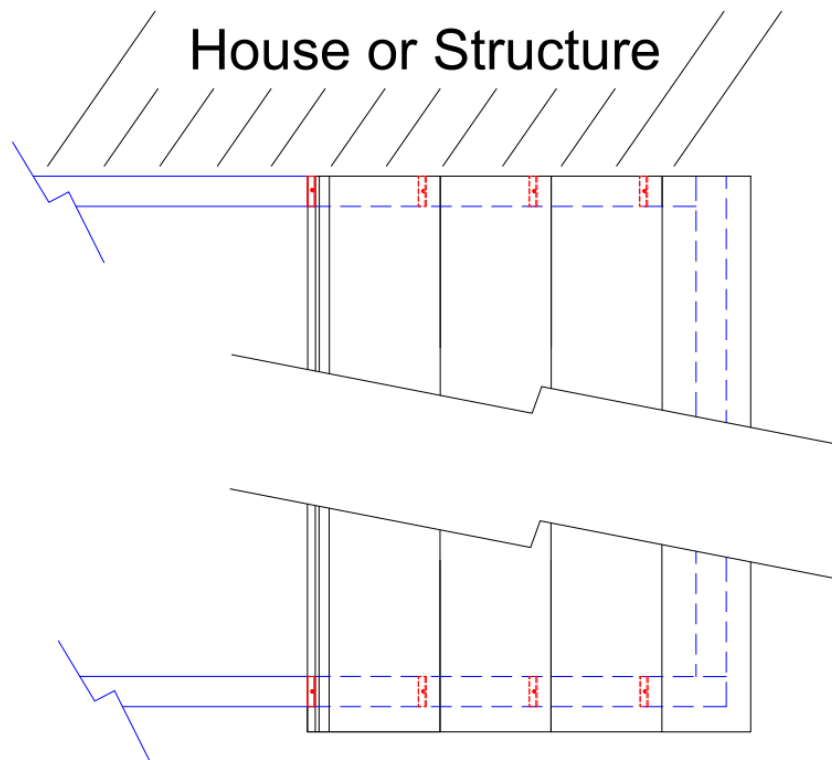
Composite decking offers numerous benefits compared to traditional wood decking, including its appealing appearance, extended lifespan, and low maintenance requirements. However, it's important to note that composite decking does undergo thermal expansion and contraction, a factor usually not encountered with wood decking. Over time, this thermal cycling can lead to fatigue in the composite material and elongation of the fastener holes, particularly with point load fasteners like trim head screws. At DuxxBak Composite Decking, we recognize that your deck is meant to endure for the long term, which is why we are dedicated to refining techniques to minimize or eradicate potential issues.

The DuxxBak Dekk Mounting Clips are engineered to address the following concerns:

1. Avoiding excessive tightening of screws, which could potentially compromise, crack or weaken the composite material,
2. Evenly dispersing the load of the fastener that secures the product in place. By functioning as a clamp, the mounting clip effectively secures the ends of the board, eliminating the point load of a single fastener.
3. Eliminates elongation of the mounting hole due to thermal expansion and contraction.

Installation of DuxxBak Dekk Mounting Clip

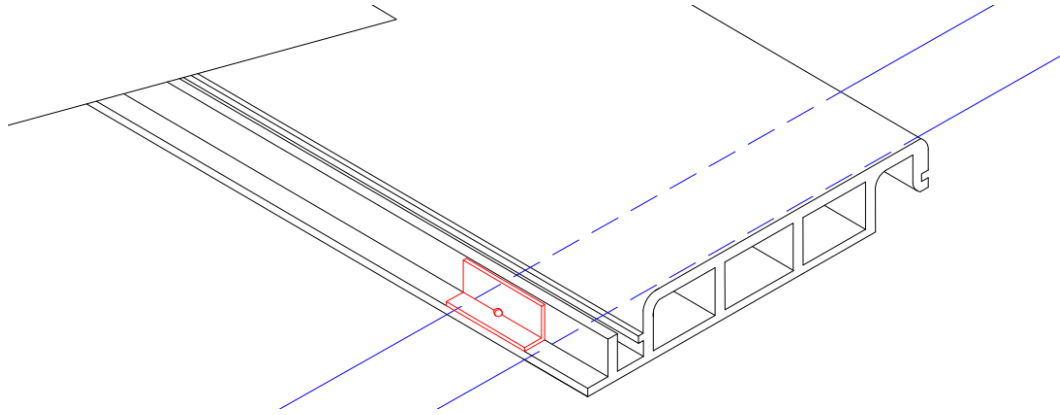
The DuxxBak Dekk Mounting Clip (highlighted in red on Diagram "A") is intended to be installed at both ends of every board.



Dia. A

Steps for Installation of DuxxBak Dekk Mounting Clip

1. Position the starter board in accordance with the DuxxBak Dekk Installation Guide, ensuring the board has the appropriate amount of overhang and the board is straight per the chalk line.
2. When a board's end meets a structure such as a house, garage, or wall, it's advisable to start fastening from the end nearest to the structure.



Dia. B

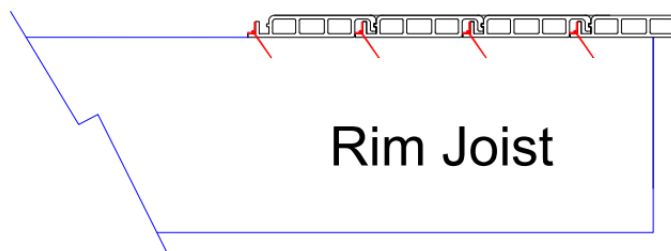
3. Once the board is positioned, align the mounting clip on the mounting flange directly above the ledger board or rim joist. Insert the screw into the predrilled hole and secure it at a 55-degree angle from the horizontal plane. See **Dia "B"**

CAUTION: When installing the fastener, do NOT overtighten. If using a #7 thin trim screw, tighten to a maximum of 25 in/lbs, if using a #8 thin trim screw, tighten to a maximum of 30 in/lbs. Overtightening could draw the head of the screw through the clamp and fracture the composite.

NOTE: For boards longer than 20 feet, it is recommended to install clips on two joists from each end of the board.

NOTE: It's crucial to install the Mounting Clip simultaneously with the board during installation. Failure to install a mounting clip means that any subsequent boards added will require removal to accommodate the missed clip. Once the deck is completed, it becomes impossible to install the mounting clips.

4. Repeat Step 3 for the remaining boards to complete the installation. See Dia. "C"



Dia. C

PREPARE & INSTALL SUBSEQUENT COURSES



Sealant is critical to a successful installation!

- Insert generous glob of sealant in the drainage channel of installed course at high end (at house) to prevent water blow-back through the channel.
- Insert sealant on first and last joist to prevent water from wicking back on underside of board.
- Insert sealant along entire length of Interlocking groove of courses where the drainage channel is interrupted.
- Introduce 1/32" gap between boards except where sealant is inserted between boards, above.
- Secure each board using approved Trim Screw at each joist. Do not exert pressure against board edge. Screw the board down, rather than over.

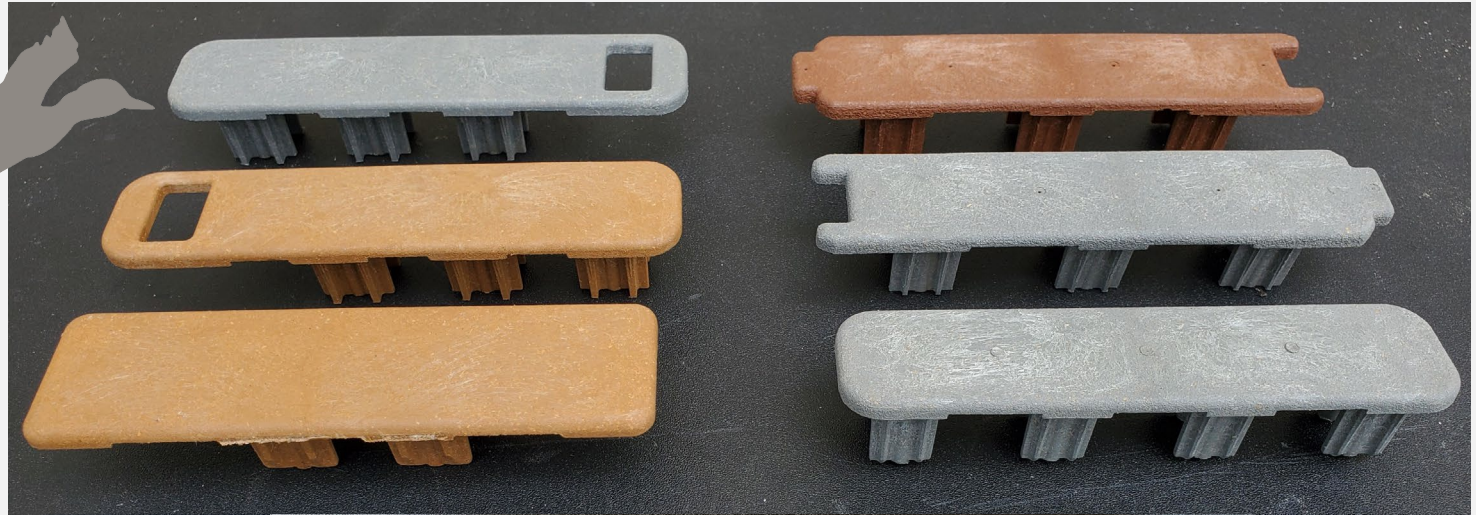
PREPARE
& INSTALL
FINAL
COURSE



- Measure and rip last course back to the appropriate vertical membrane and clean up with sander.
- Install sealant per previous instruction.
- Secure final board with #7 x 2 1/2" approved Trim Screws through board face.



Engineered Profile End Caps

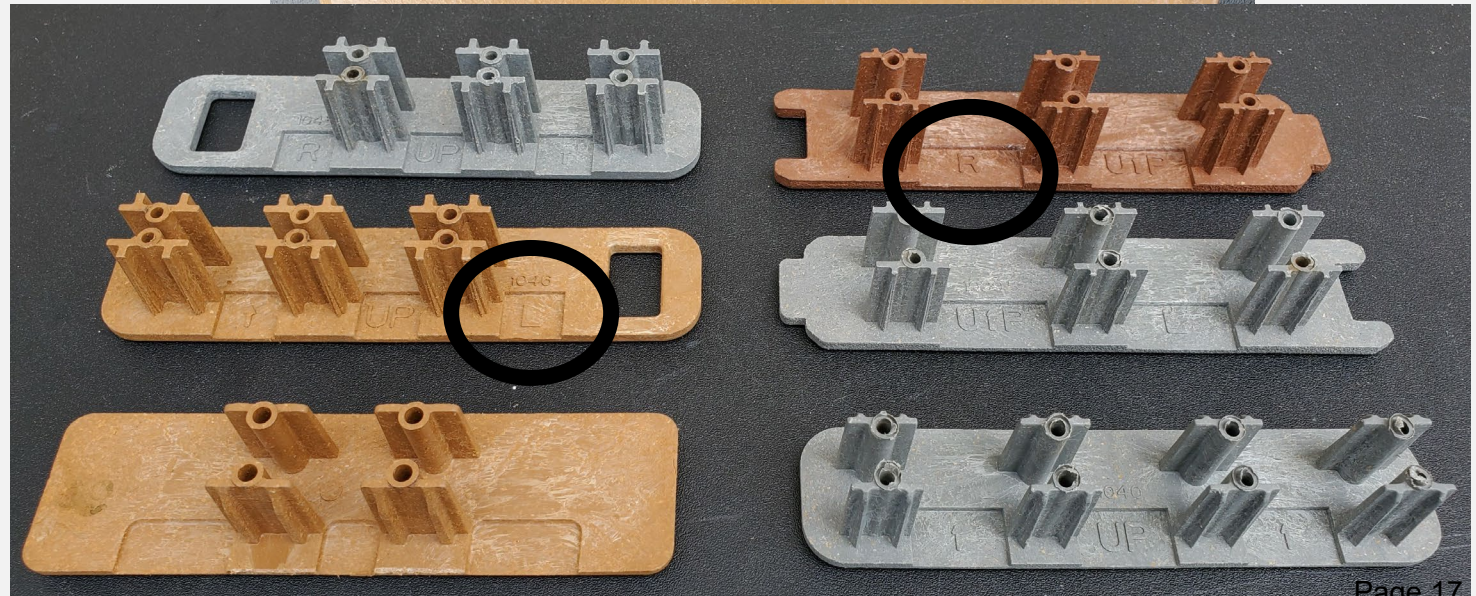


Drainage reliefs must be oriented downward



LEFT or RIGHT?

To determine direction, stand outside deck looking at end cuts. Which end did you start at—Left or Right? That's the end cap you need. Sold in kits: 1L & 1R



NOT DONE JUST YET

1

Seal deck to house.

- Install a generous bead of sealant the entire length of deck along the house, approximately $\frac{3}{4}$ " from structure.
- Install flashing behind siding and house wrap, extending flashing onto decking about $1\frac{1}{2}$ ". (Bend flashing at just-less than 90-degrees, so as not to create a dam that will hold water.)
- Compress sealant with flashing.
- Secure flashing to house behind house wrap.

2

Seal railing posts to deck


- Seal each railing-post base to deck using Butyl Tape (for 4x4) or Lexel (for structural posts).
- When installing structural posts atop DuxxBak, tighten fasteners evenly, so that you don't break the board with uneven pressure.

3

Install End Caps

- Apply sealant to two legs of each end cap, and insert into board ends.
- Alternatively, pre-drill $\frac{1}{8}$ " hole through top or bottom of deck board into at least 2 end cap legs. Follow with #6 x 1" Stainless Steel, pan-head or truss-head sheet metal screws.

Dry Space Cost Comparison
DuxxBak vs. The Competition
16' x 20' Deck 8' High

		Trex Transcend & Rainescape	AZEK Vintage & DrySpace	TimberTech Legacy & DexterDry	Pressure Treated & EPDM membrane
Warranty	Limited Lifetime	20 Year Limited	25 Year Limited	25 Year Limited	None
One-Person Installation	Yes	No	No	No	No
Decking & Drainage In One	Yes	No	No	No	No
Protects Deck Structure	Yes	Yes	No	Yes	No
Gasket Free	Yes	No	No	No	No
Wood Free	Yes	No	Yes	No	No
PVC Free	Yes	No	No	No	No
Drains Outside Deck Footprint	Yes	No	No	Yes	Yes
Available 12', 16', 20', 24'	Yes	No	No	No	No
Fastener-Free Surface	Yes	No	No	No	No
Spans Joists @ 24" OC	Yes	No	No	No	No
16' x 20' Cost -- No Structure	\$5,305 **	\$7,941	\$10,207	\$7,813	\$3,624
Labor Hours to Install 16'x20'	8	32	26	20	88 *
Labor cost @ \$60 man/hour	\$480	\$1,920	\$1,560	\$1,200	\$5,280
Total Cost Labor & Material	\$5,785	\$9,861	\$11,767	\$9,013	\$8,904

* Includes 5x8 hours bi-annual maintenance (10 years)

** Add \$638 for capped or lasered DuxxBak

The labor hours and material costs that have been calculated are solely for the decking and water management system. They do not account for costs associated with site preparation, substructure, stairs, railing, design, permits, delivery costs, disposal costs, or project management.

Update: March 28, 2023



For more info, or for
product and install support,
visit
www.DuxxBakDecking.com



THANK YOU!
AND
CONGRATULATIONS!